

## Updating the Speech Files

Find your ICON for the CS800D or the CS800, CS801 and CS750 and start the program.



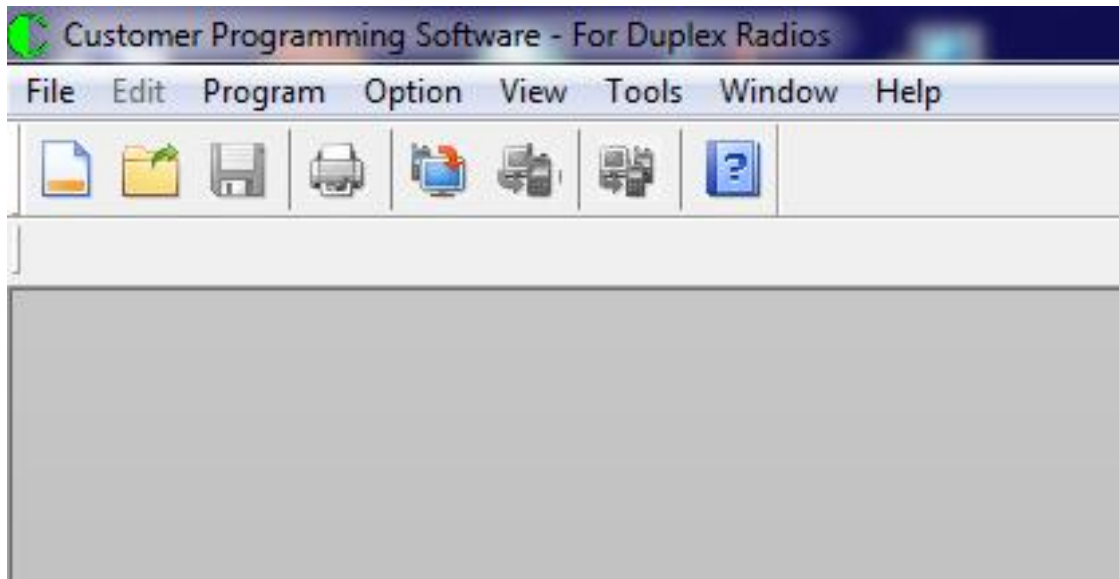
CS800D ICON



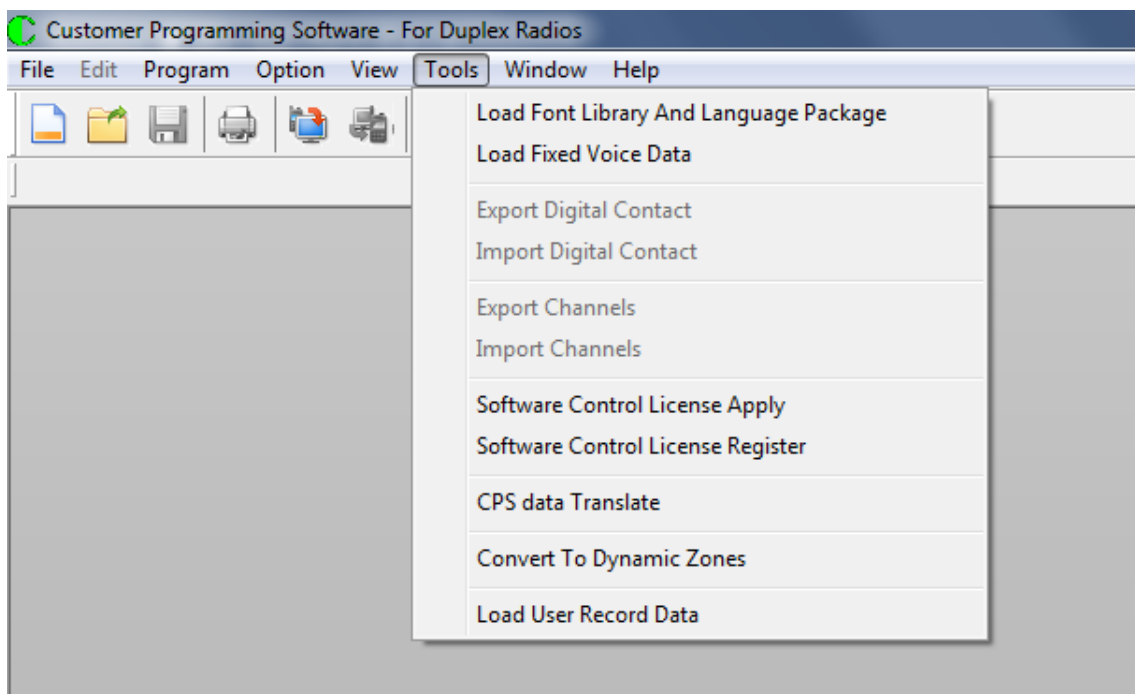
CS750, CS800 and CS801 ICON

The voice file that you should already downloaded from the website is a ZIP file. Don't forget to unzip it.

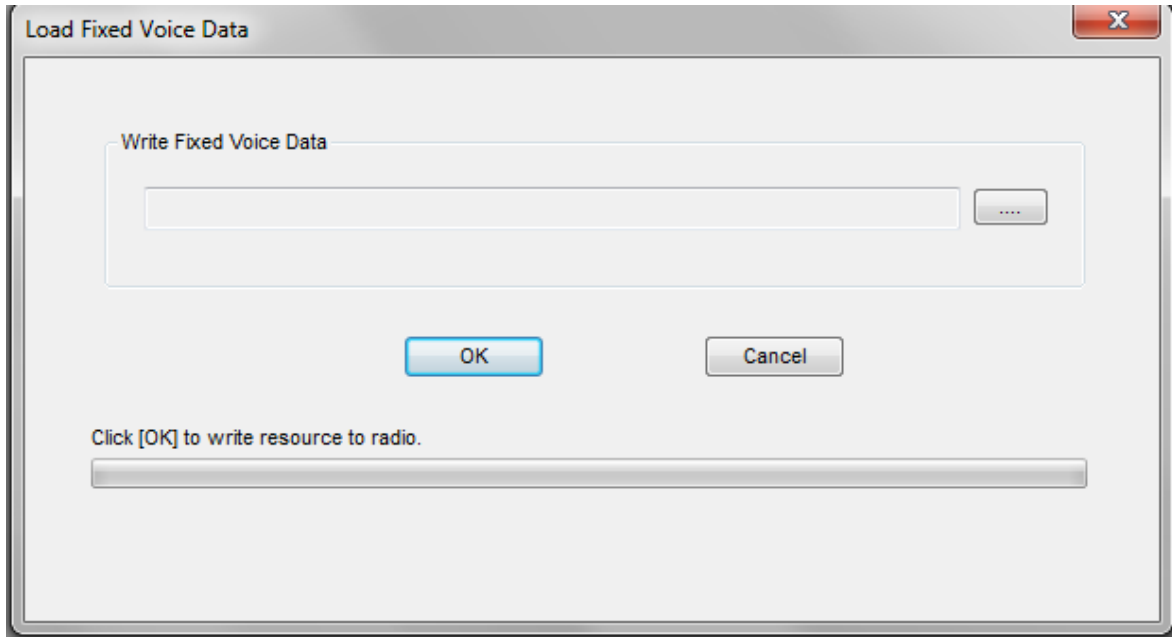
You should get the following screen:



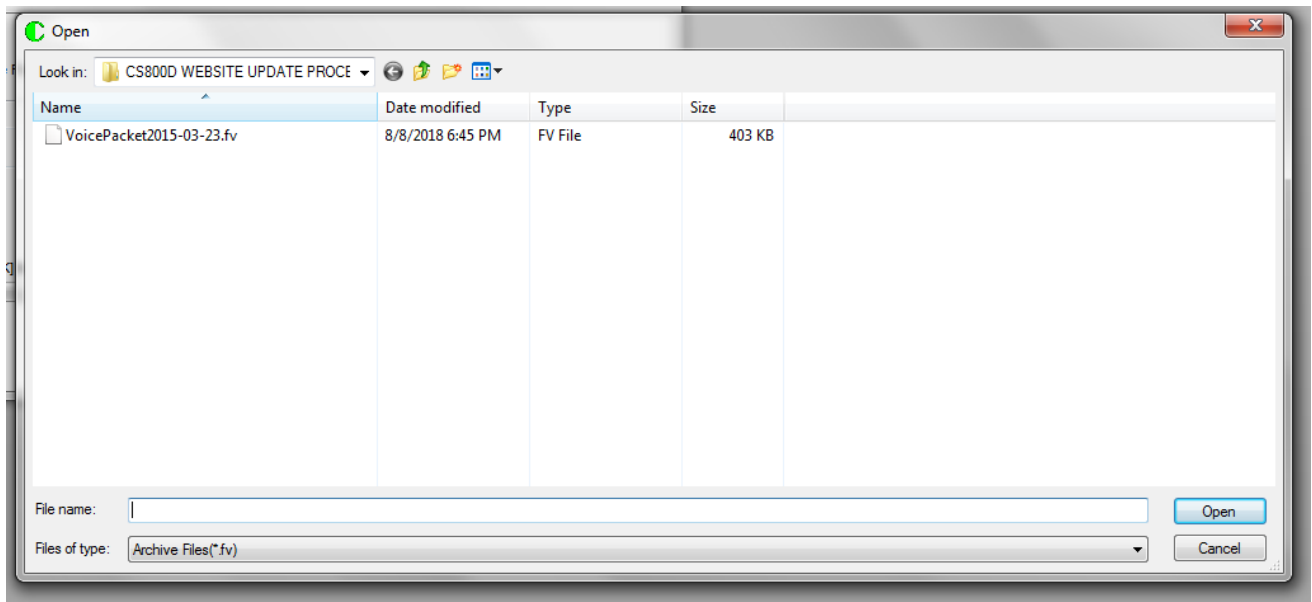
Press the Tools pulldown menu and you should see the following:



Click on the Load Fixed Voice Data in the Tools pulldown menu and you should see the following:

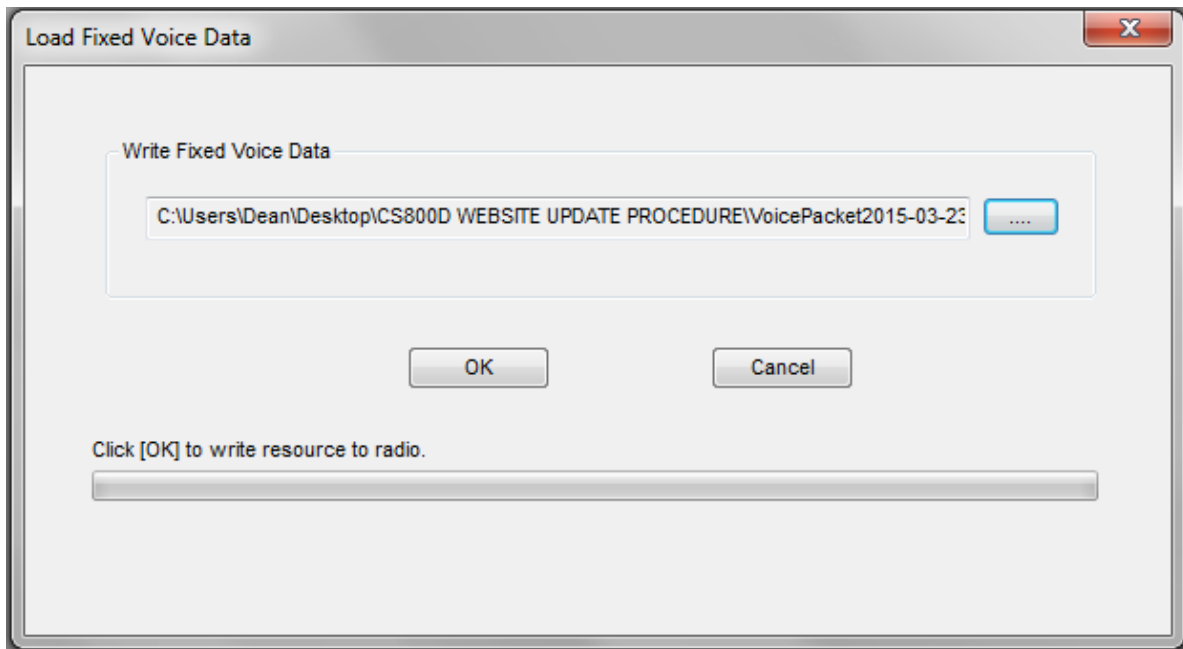


Click on the rectangle with the three dots and you should get the following:

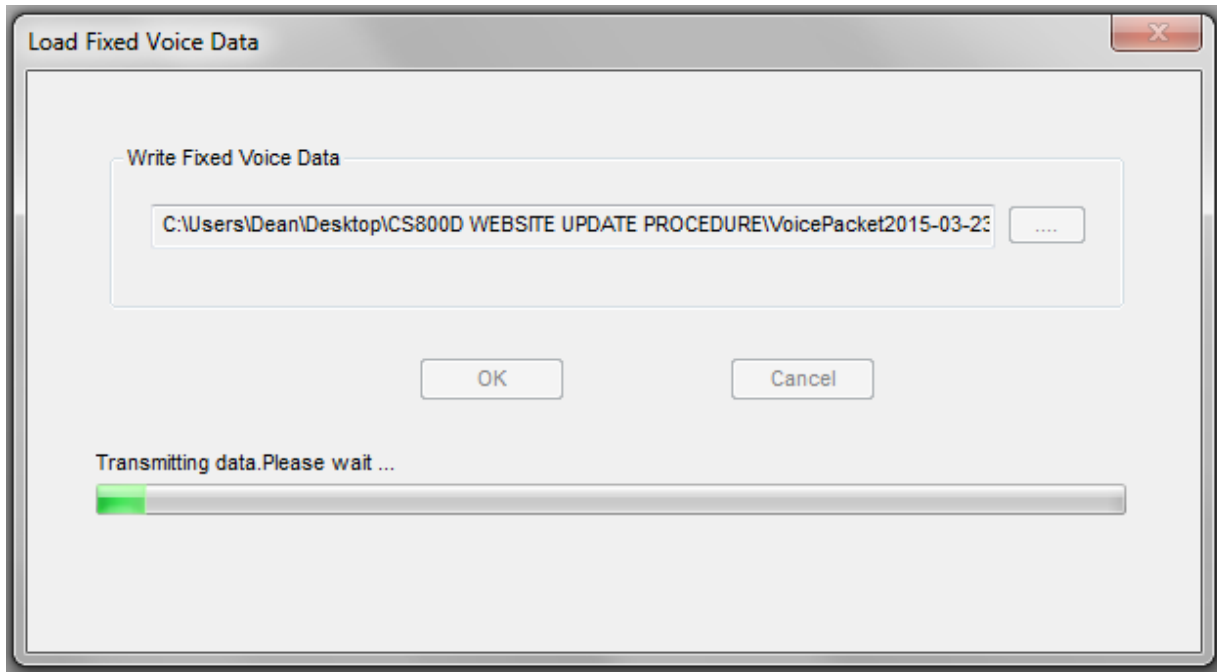


This is a standard windows screen and you might have to search for your voice packet file.

Double click on the voice packet file and you should get the following:



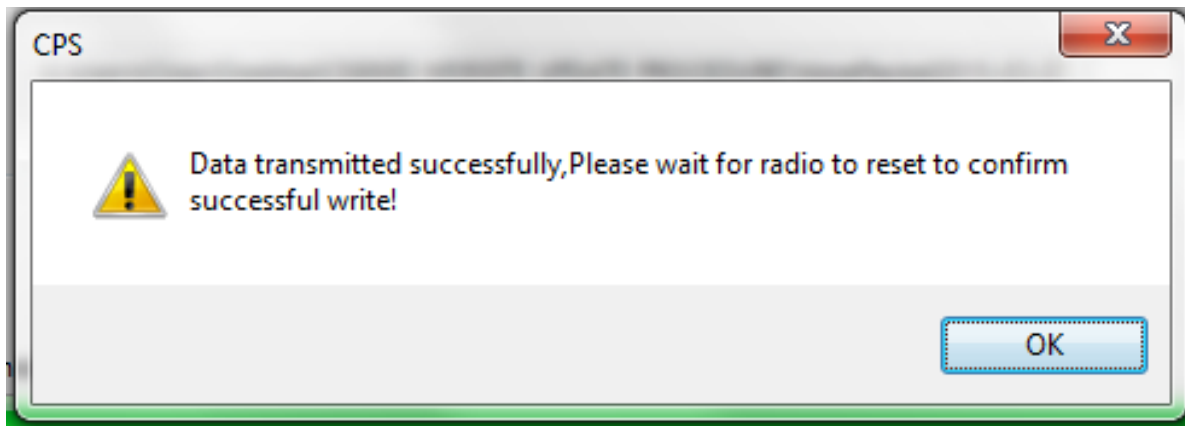
Press the OK key and you should get the following:



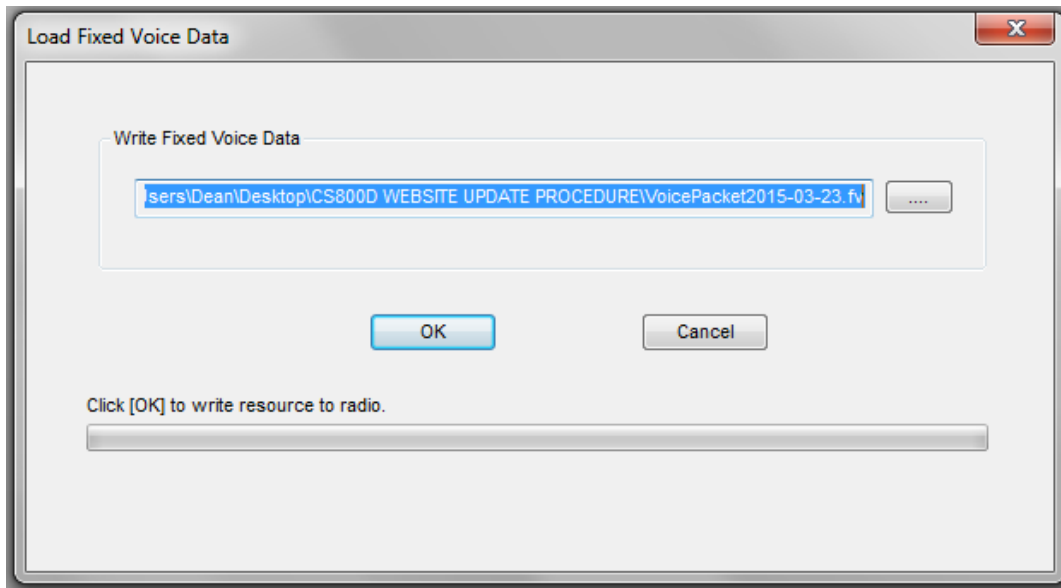
While the data is being loaded into the radio, the radio should show the following:



After the speech file has been loaded into the radio, the screen should show the following:



Press the OK button and you will now get the following:



Press the red button with the “X” to exit from this program. If you press the “OK” button like you would expect, the program will load the speech file again. This is not a problem but is a nuisance.

The radio will reset itself and now you are ready to use the radio. If you keep the DB15 programming cable plugged in, the radio will not announce the channel number until you remove the cable.