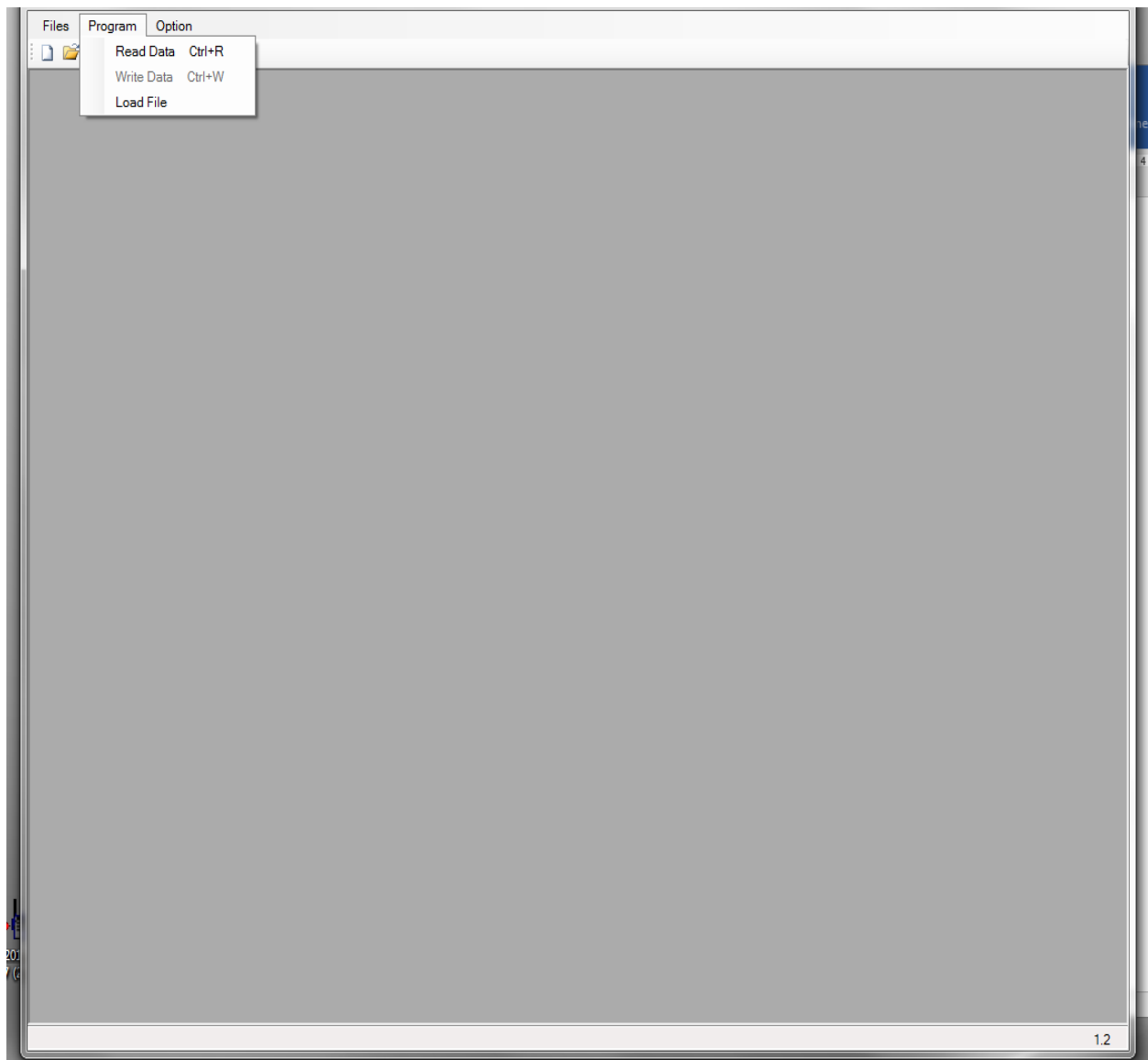


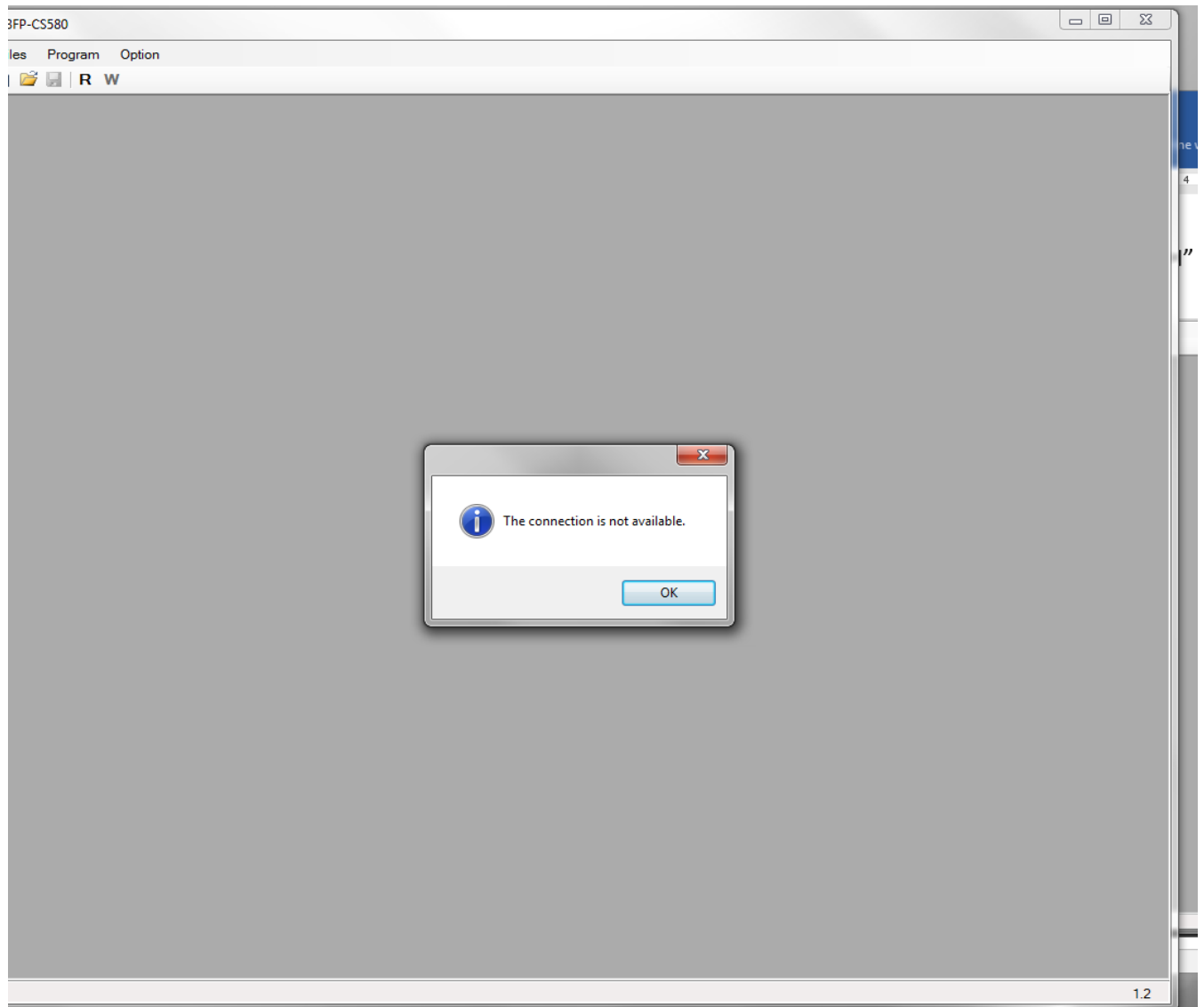
## LOADING “ENGLISH” FILE

Store the “ENGLISH” file from the CSI website someplace in your computer.

Start CPS and click on Program tab to access pull down menu



You might get the following screen:



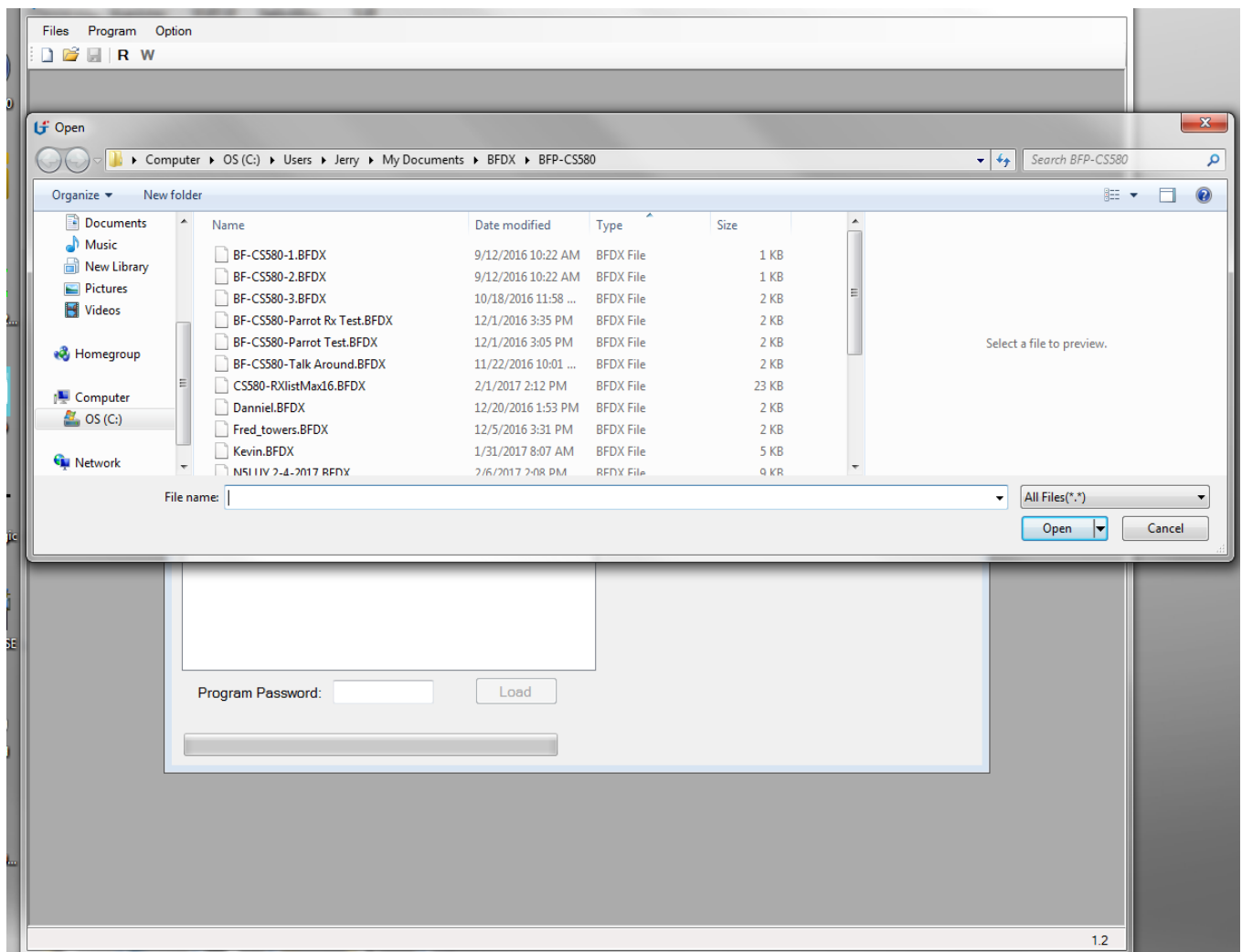
Press OK and you should get the following screen:

Press the Select key to bring up a screen that will allow you to find the “ENGLISH” file

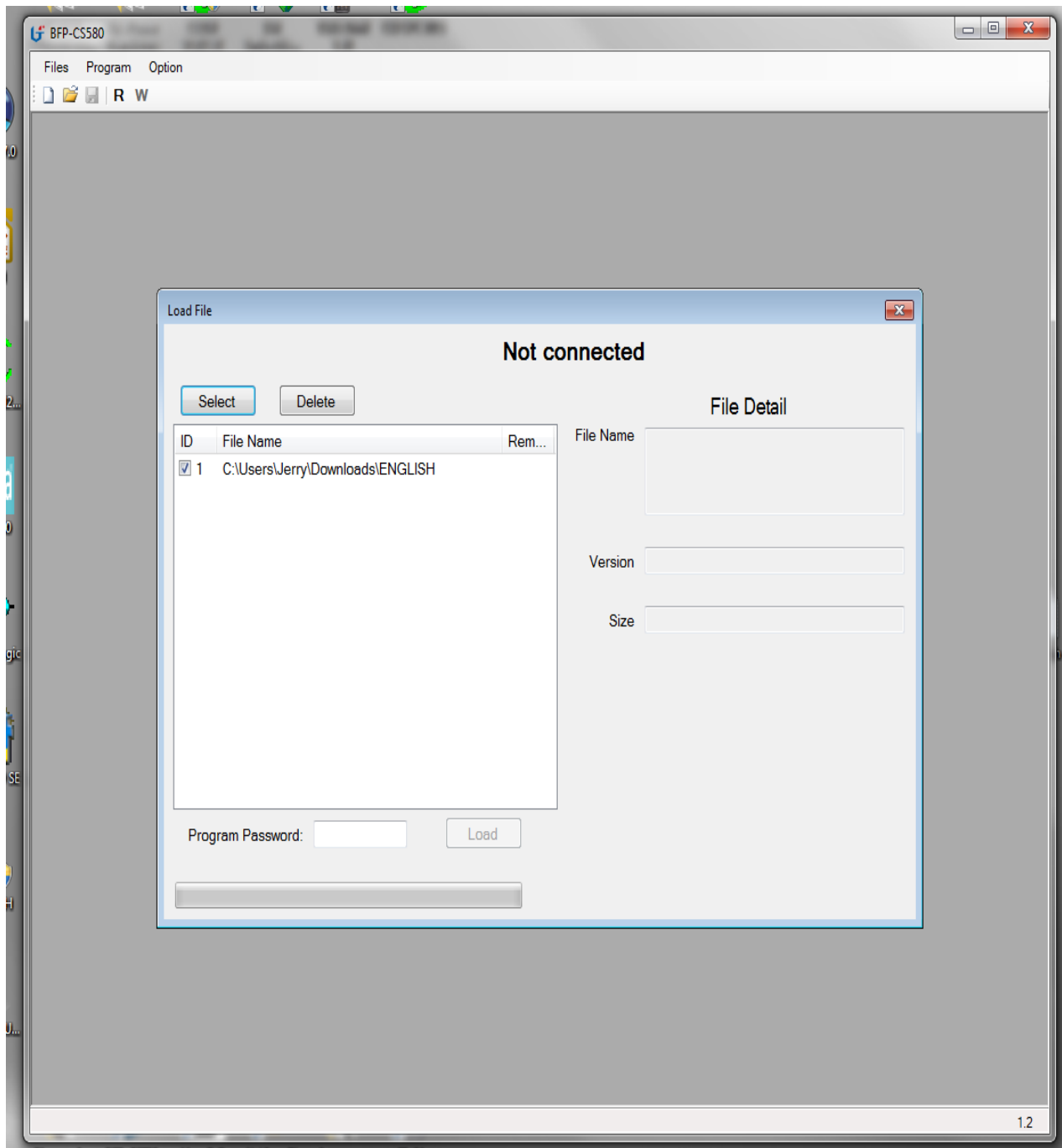
The screenshot shows a window titled "Load File" with a standard Windows-style title bar (minimize, maximize, close buttons). The main content area has a light gray background. At the top center, the text "Not connected" is displayed in bold. Below this, there are two buttons: "Select" and "Delete". To the right of these buttons is a section titled "File Detail" which contains three input fields: "File Name", "Version", and "Size". On the left side, there is a table with three columns: "ID", "File Name", and "Rem...". The table is currently empty. At the bottom left, there is a label "Program Password:" followed by a text input field and a "Load" button. A progress bar is located at the very bottom of the window.

ID	File Name	Rem...
----	-----------	--------

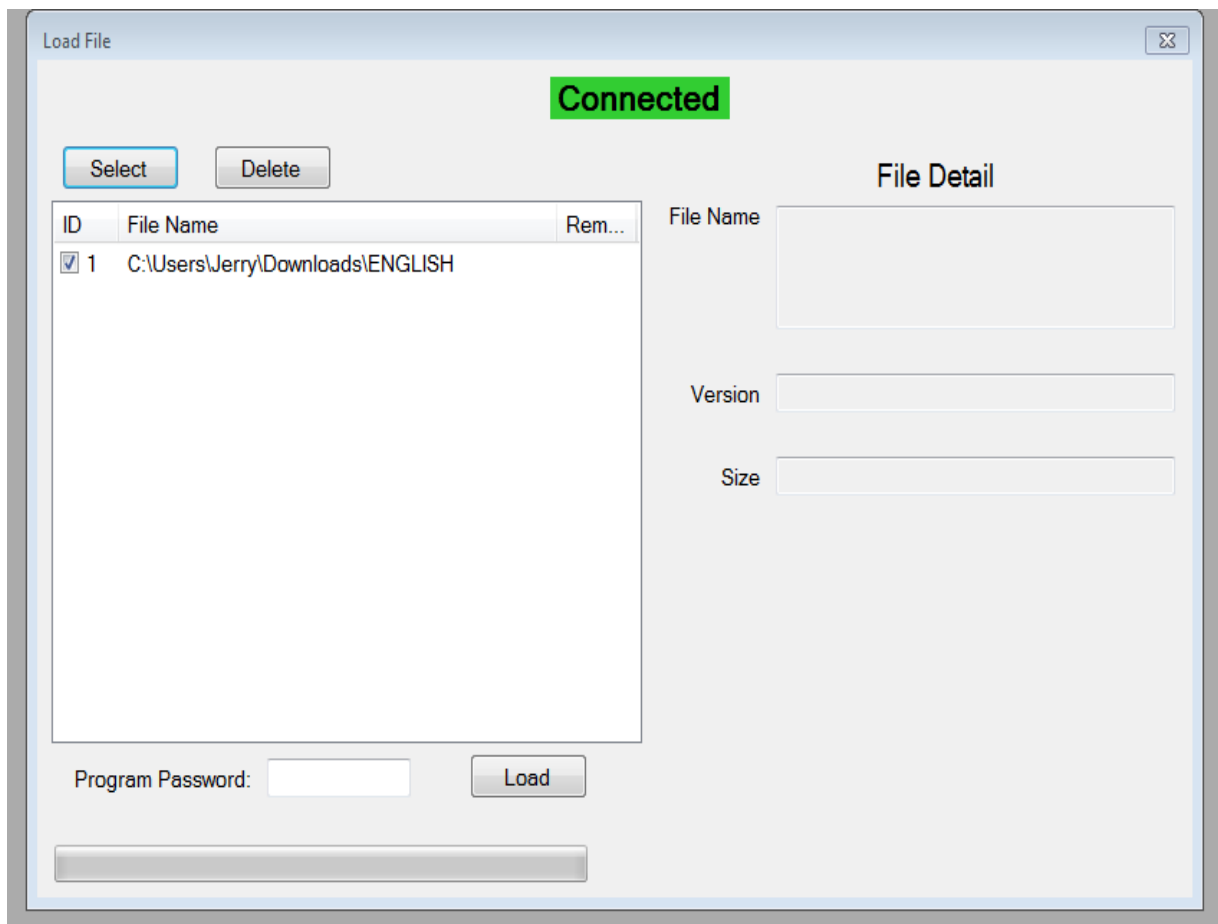
The example below is what is on my computer but your computer will be different. I normally store files like this in the download directory but the location where you store it is up to you.



Once you find the file double click on it and you will see the following screen:



Attach the radio to the computer and turn on the radio and the screen should look as follows:



Press the “Load” key and you are now done.

The screen will look as follows:

