

Using Flashburn 3.00

The Flashburn 3.00 program is used for installing new firmware or the bootloader into the CS750, CS751, CS800, CS801, and CS800D.

Step 1

First thing you need to do is download Flashburn 3.00 from our website. You can find the program at the following links:

http://www.connectsystems.com/products/top/radios/CS750_SOFTWARE.htm

http://www.connectsystems.com/products/top/radios/CS800_SOFTWARE.htm

http://www.connectsystems.com/products/top/radios/CS800D_SOFTWARE.htm

Once you get the program, install it and generate a desktop ICON so you can use it later. You can skip this step if the program is already installed.

Step 2

Download the firmware and bootloader from the same place as the Flashburn 3.00 program and store it in the same directory the Flashburn 3.00 is residing or any other directory of your choosing. You do not always have to download the bootloader.

Step 3

Attach the CS800D radio to a power supply and turn on the power supply. If the radio is turns on, turn it off.

Step 4

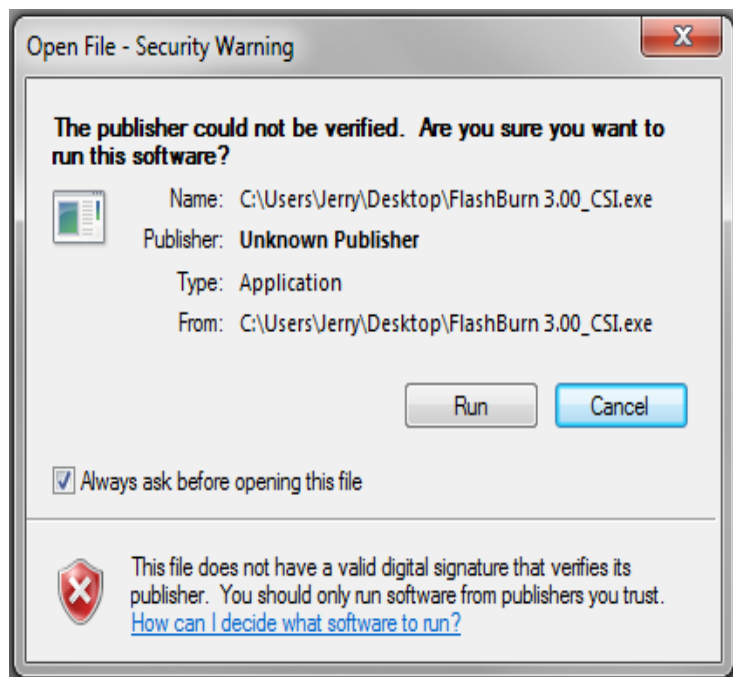
Attach the Programming cable between the 15 pin connector in the back of your radio and your USB port of the computer.

Step 5

Double click on the Flashburn 3.00 ICON to start it. The Flashburn 3.00 ICON looks as follows:

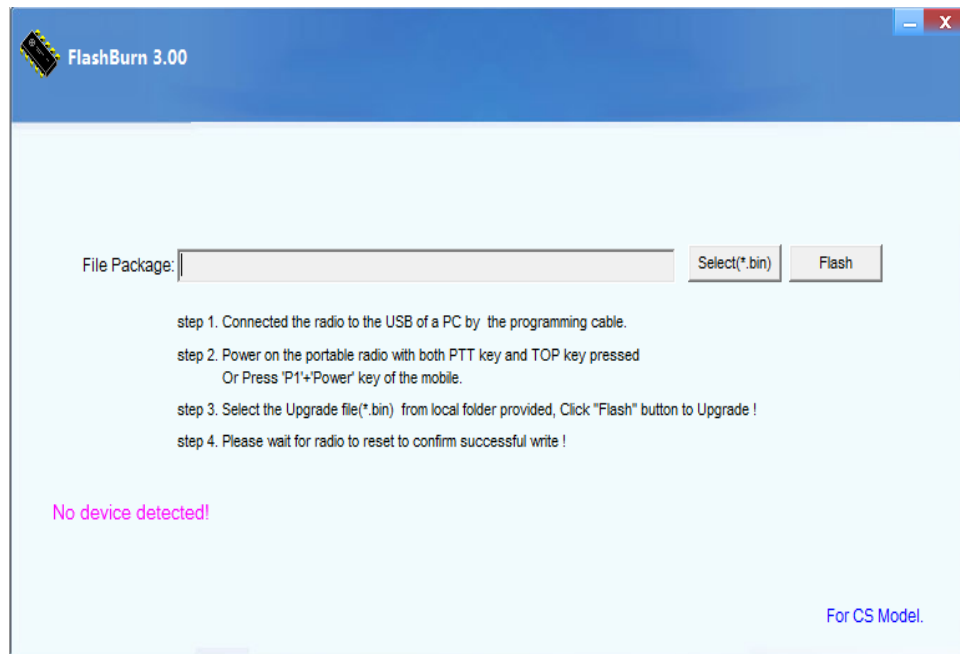


When you double click on the ICON you should get the following screen:



Step 6

Press the Run key and you should get the following screen:



Step 7

For the CS800, CS801, and CS800D, press the P1 key in the front of the radio and while it is pressed, turn on the radio. If you did that correctly, the display on the radio should show:

Program
Mode

And the light should flash between red and green at about two times per second.

A photo of the display is as follows for both the red and green LED:



If you are updating the firmware for the CS750 or CS751, turn off the power, press the PTT and the orange button on top and while both of those are pressed, turn on the power.

The CS750 or CS751 LCD display will be blank and the LED will flash between red, orange, and green.

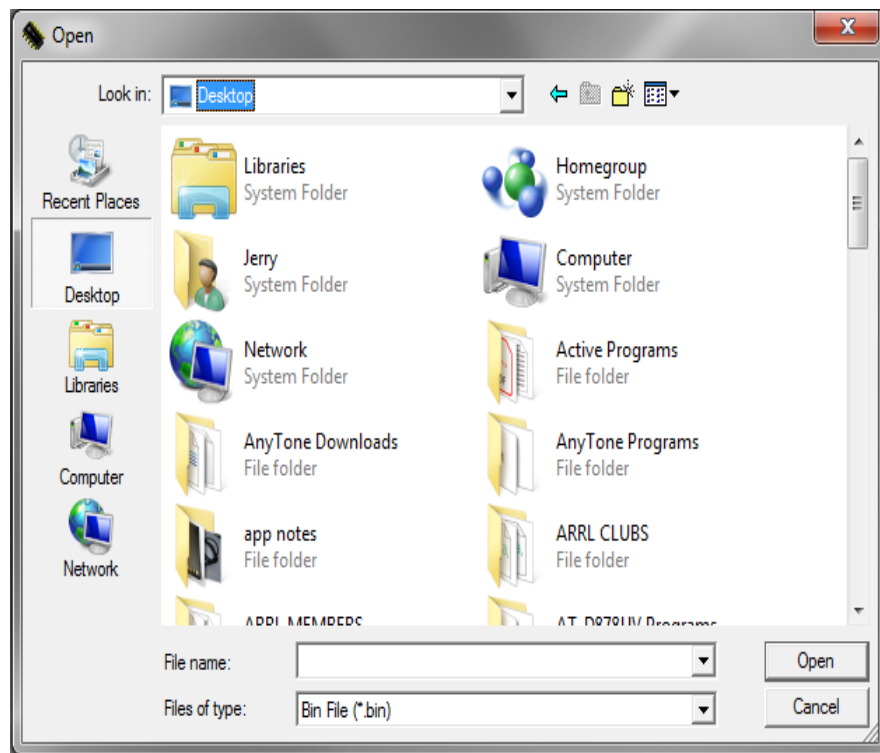
The Computer screen should show:



Notice the display shows “The device has been connected!” in purple letters.

Step 8

Double click on the Select(*.bin) button and you will get a screen similar to the following:



Find the program you want to use double click on it and you should get something similar to the following:



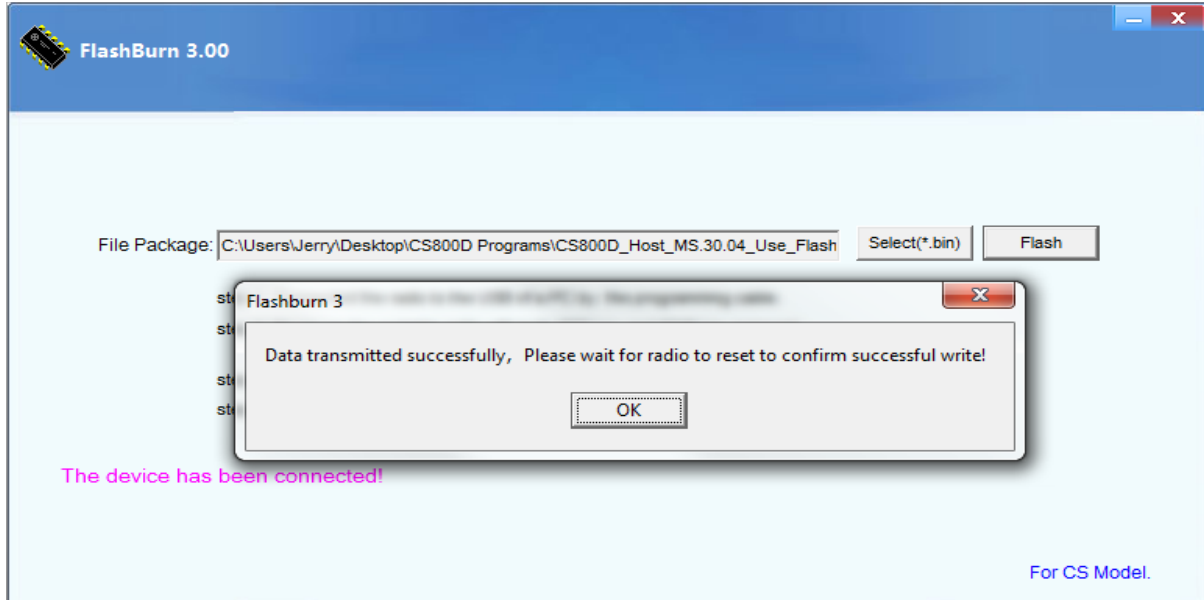
Step 9

Press the Flash Button and you should see the following:



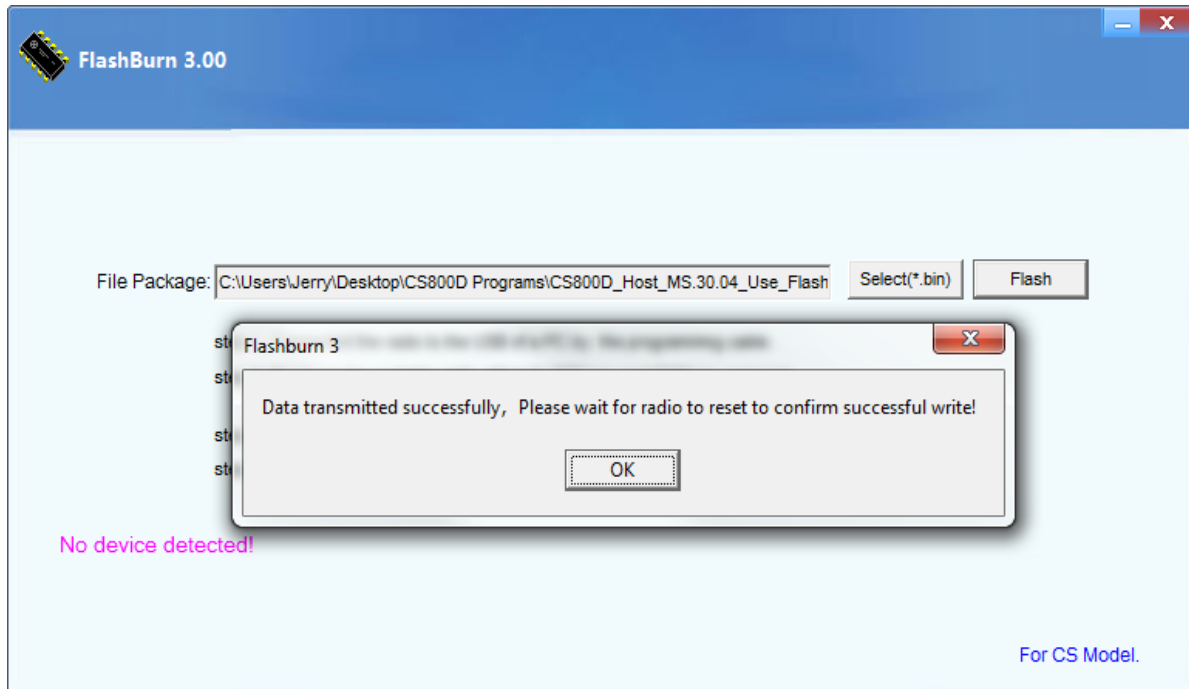
Step 10

After you patiently wait for the green bar to go to the right, you should see the following:



Step 11

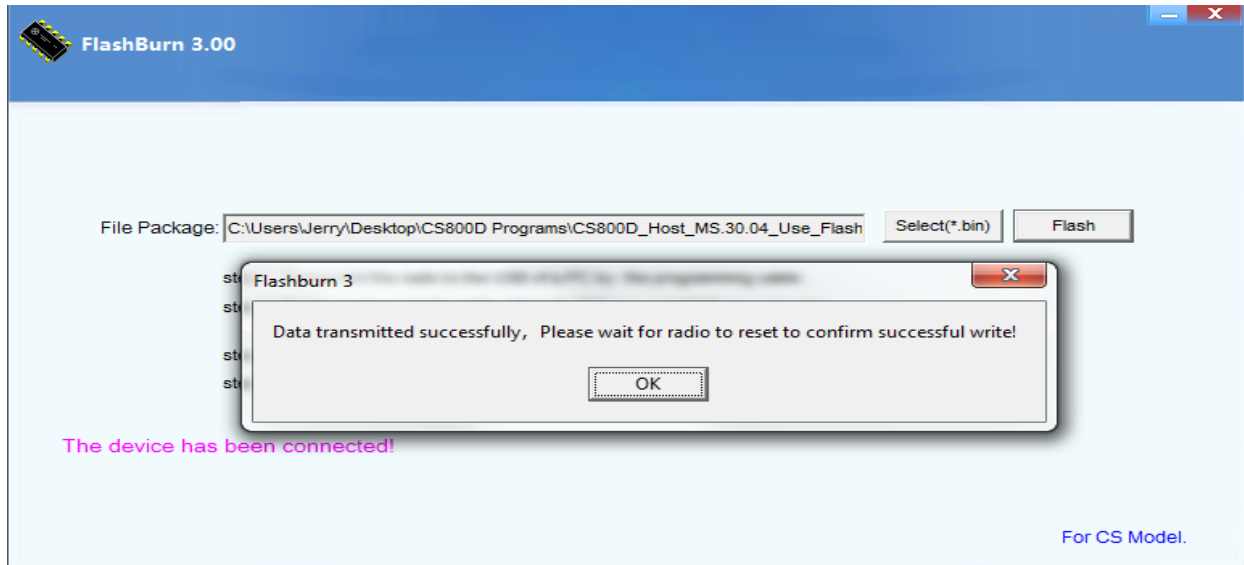
While the radio is in the reset mode, you will see the following:



Notice the display then shows “No device detected!” in purple letters.

Step 12

Once the reset is complete, the display will show “The device has been connected!” in purple letters.



Step 13

Press the OK button and the display will look as follows:



Step 14

Press the power button on the radio for about 10 seconds and then let go. The radio should turn off, the display should be blank, and the light should stop flashing. Your radio has now been updated with the newest firmware and you are now ready to use your radio or possibly add more files.